



Home Care Pricing Schedule (NT)



Established as a not-for-profit in 1968, Southern Cross Care has been providing quality services to members of our community for more than 50 years. We understand that your home is where your heart is, where your memories are, and where you feel safe and comfortable. We also understand that to live independently in your own home for as long as possible, you may need a little support. That is why we offer a wide range of quality Home Support services to help you live Better for life, at home.

| Approximate Home Care Package Amount | | Level 1 | Level 2 | Level 3 | Level 4 |
|--------------------------------------|---------------|----------|----------|----------|----------|
| Home care package funding | Annual | \$9,180 | \$16,148 | \$35,139 | \$53,268 |
| Home care package funding | Per fortnight | \$352 | \$619 | \$1,348 | \$2,043 |
| Basic Daily Fee paid by you | Per fortnight | \$141.12 | \$149.24 | \$153.58 | \$157.64 |

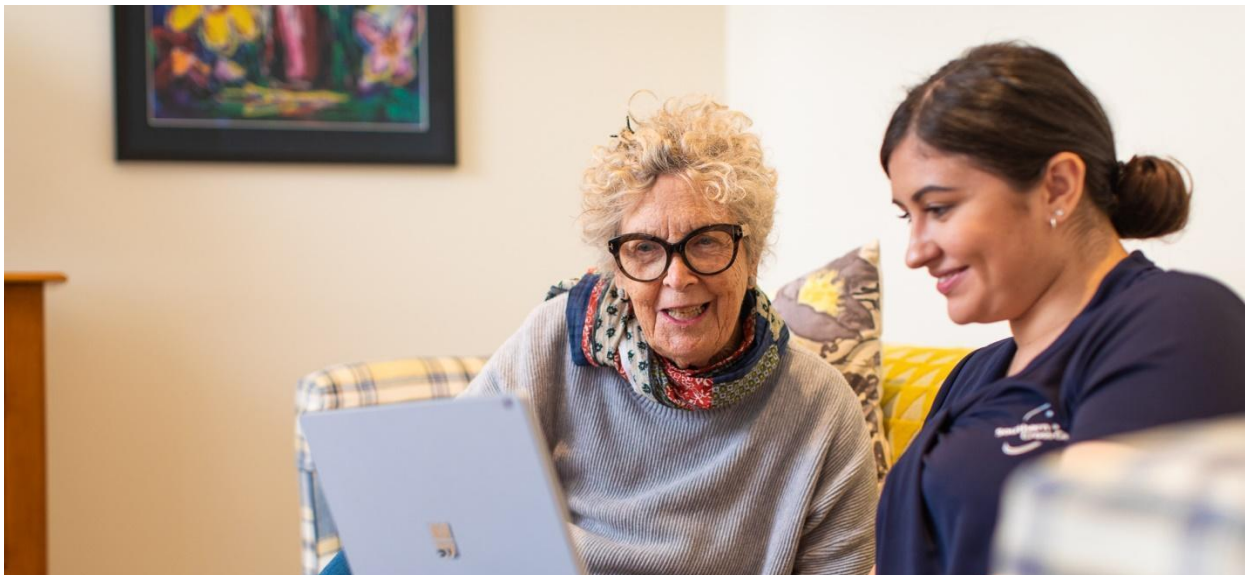
Note: The Home Care Package funding amounts are current as at 1st July 2022 and subsidies have been round to the nearest \$. Further information about your contributions is available on My Aged Care.



Care Management

Care management includes coordination of care and services that will help you achieve the goals you identified in your Care Plan. Every Home Care Package, including those being self-managed, will require some level of care management.

| Approach to care management | | Our care management approach is evidence-based and person-centred. We partner with you to deliver a holistic care management service that focuses on early intervention, frailty prevention and social support. Supported year-round by registered general and specialist nurses, and allied health professionals, our care management is professional and strives to meet your individual needs. We will also work with you to set goals, and provide you with the care and support you need to achieve them. | | | |
|-----------------------------|---------------------------------|--|----------|-----------|----------|
| | | Level 1 | Level 2 | Level 3 | Level 4 |
| Fully managed by provider | Per fortnight | \$ 118.13 | \$247.01 | \$ 343.67 | \$408.10 |
| Fully managed by provider | Approx. no. hours per fortnight | 1.7 | 3.5 | 4.9 | 5.8 |
| Self-managed by you | Per fortnight | NA | NA | NA | NA |
| Self-managed by you | Approx. no. hours per fortnight | NA | NA | NA | NA |





| Price for Common Services | How the provider delivers services | Standard Hours 7am – 5pm | Non-Standard Hours 5pm – 7am | Saturday | Sunday | Public Holiday |
|--|---|-----------------------------|---------------------------------|----------|----------|----------------|
| Personal care (Per hour) | Providers own staff (prices as indicated) | \$55.00 | 5pm – 10pm \$62.00 | \$67.00 | \$87.00 | \$117.00 |
| | | | 10pm – 7 am \$98.50 | | | |
| Nursing (Per hour) | Through other service providers (prices as indicated + 10%) | \$115.00 | 5pm – 10pm \$125.00 | \$160.00 | \$185.00 | \$245.00 |
| | | | 10pm – 7 am \$150.00 | | | |
| Cleaning and household tasks (Per hour) | | \$55.00 | N/A | \$67.00 | \$87.00 | \$117.00 |
| Light gardening (Per hour) | | | N/A | | | |
| In-home respite (Per hour) | | \$55.00 | 5pm – 10pm \$62.00 | \$67.00 | \$87.00 | \$117.00 |
| | | | 10pm – 7 am \$98.50 | | | |

| Other Costs | | Level 1 | Level 2 | Level 3 | Level 4 |
|---|---------------|-----------------------|---------|---------|---------|
| Package management | Per fortnight | \$46.03 | \$46.03 | \$92.05 | \$92.05 |
| Maximum exit amount | Max. Total | \$0 | | | |
| Staff travel costs to visit you | Per km | Included in unit cost | | | |
| Separate cost when you want to receive services from a different provider | Yes | 10% brokerage fee | | | |