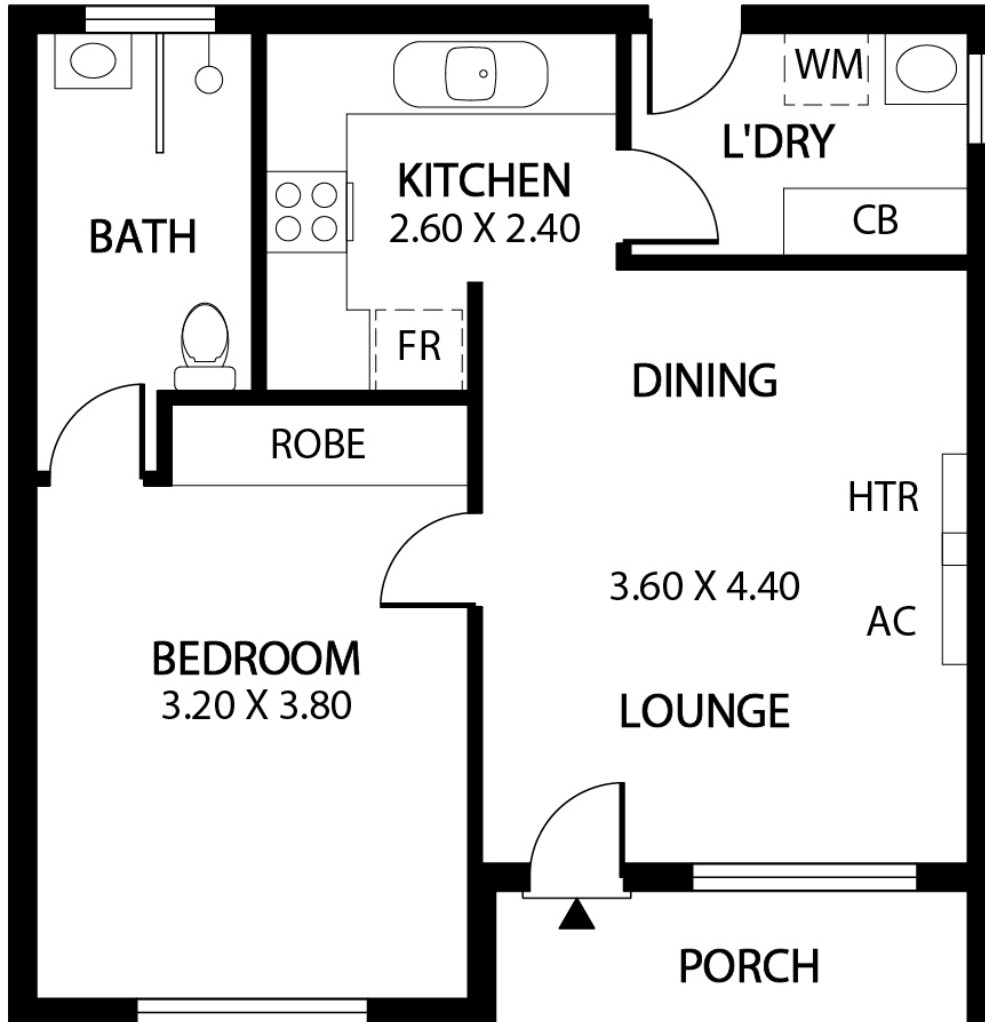


Croydon Park

29 Tungara Avenue, Croydon Park



Typical Unit

1 | 1 | 1

Total Living 51.42 m²

1800 852 772

southerncrosscare.com.au

Specifications and details are indicative only and are subject to change

Southern Cross Care (SA, NT & VIC) Inc ARBN 129 895 905, South Australia, liability limited
Correct as at March 2021

**Better
for life[®]**

