



The Mornington

Retirement Village

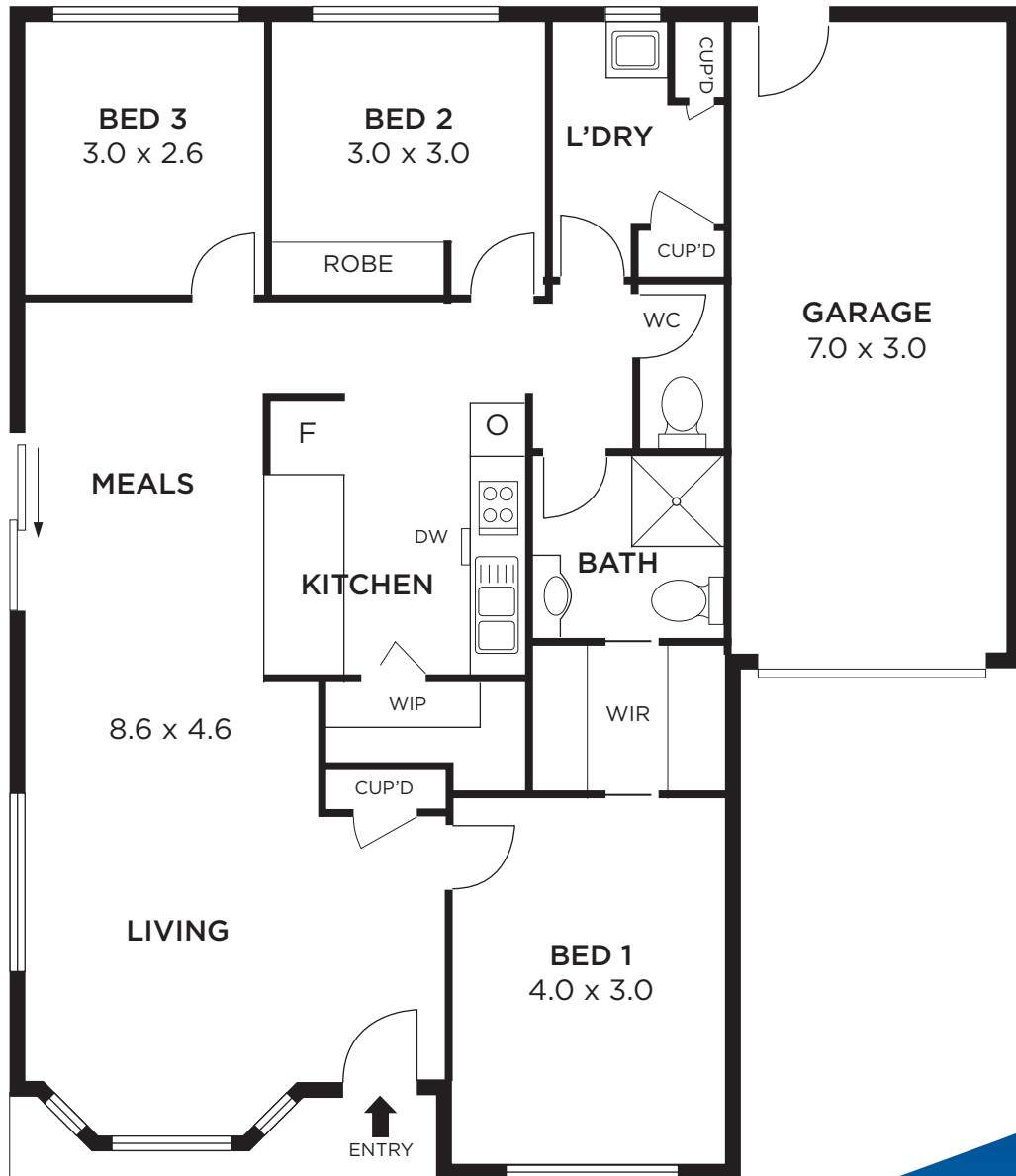
Unit 124 - Type 3E

3 | 1 | 2 | 1

Living 94 m²

Garage 21 m²

Total Living 115 m²



1800 852 772

SouthernCrossCare.com.au

150 Mornington-Tyabb Road Mornington, VIC 3931

Specifications and details are indicative only and are subject to change.

Southern Cross Care (SA, NT & VIC) Inc ARBN 129 895 905, South Australia, liability limited
Correct as at May 2026

**Better
for life®**

